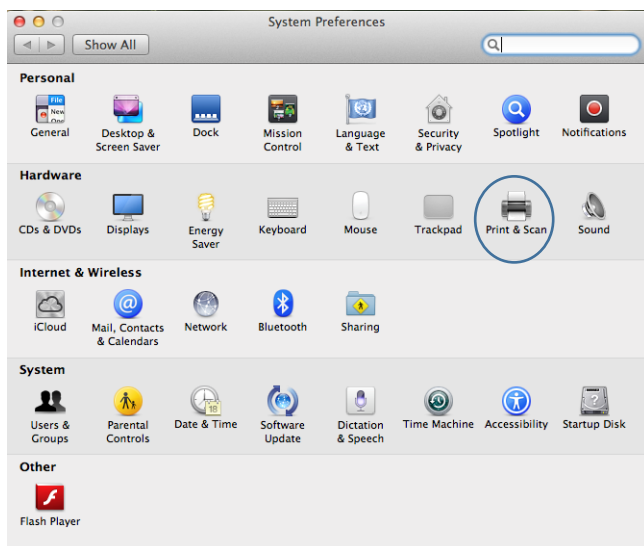


Printer setup

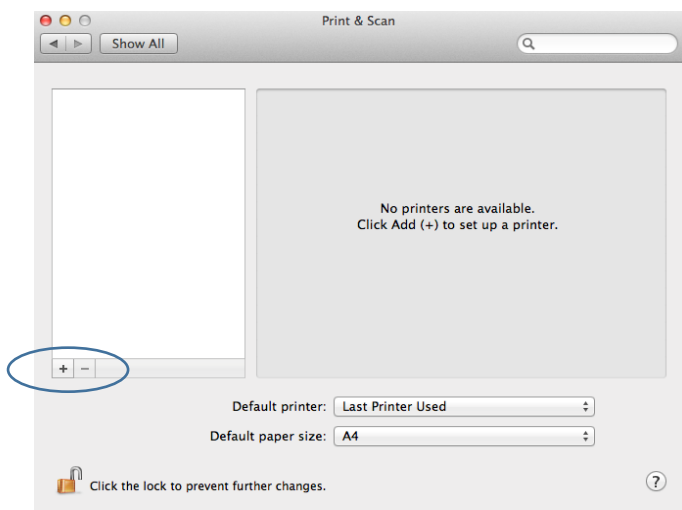
SafeCom Printing

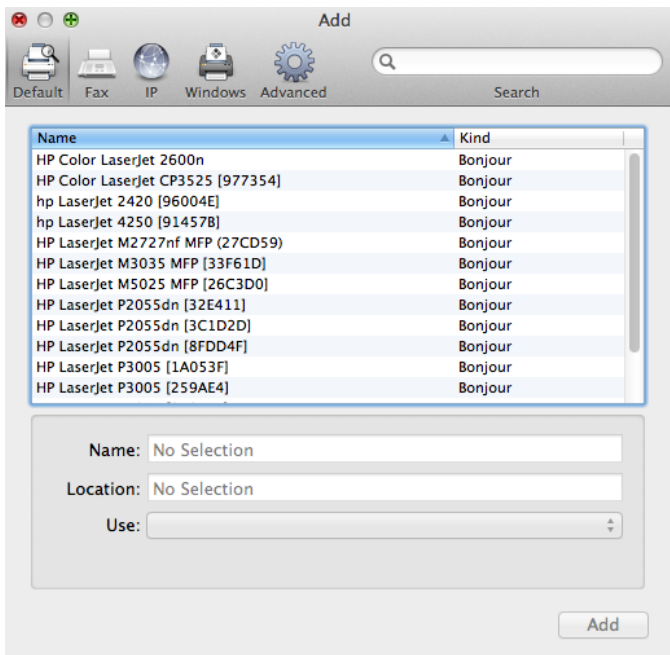
Click On System Preference

Navigate and Click On **Print and Scan**



Click on the **Plus Button**

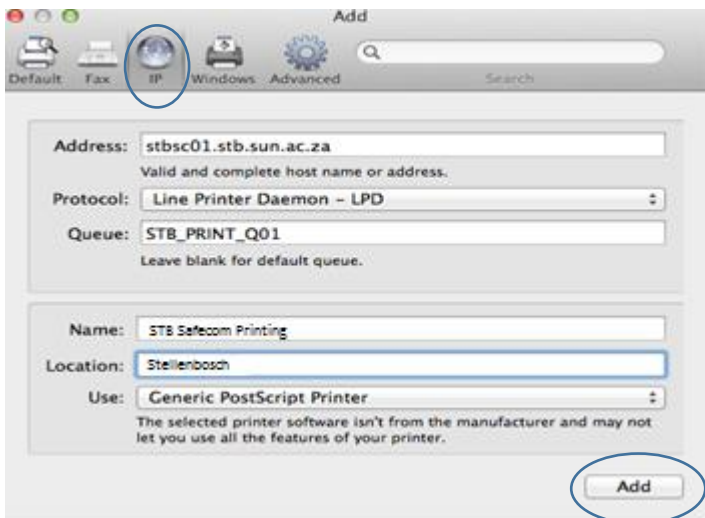




Click on the **IP** Icon

Fill in Detail for either STB Safecom Printing or TYG Safecom Printing

STB Safecom Print Queue Configuration, Then Click **Add**



Staff - \\stbsc01.stb.sun.ac.za\STB_PRINT_Q01

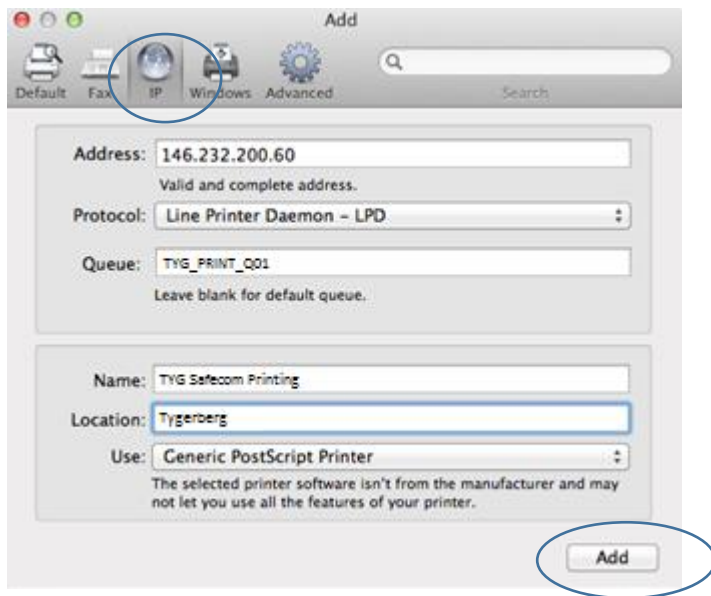
FHARGA -- \\stbsc02.stb.sun.ac.za\STB_PRINT_Q01

NARGA -- \\stbsc03.stb.sun.ac.za\STB_PRINT_Q01

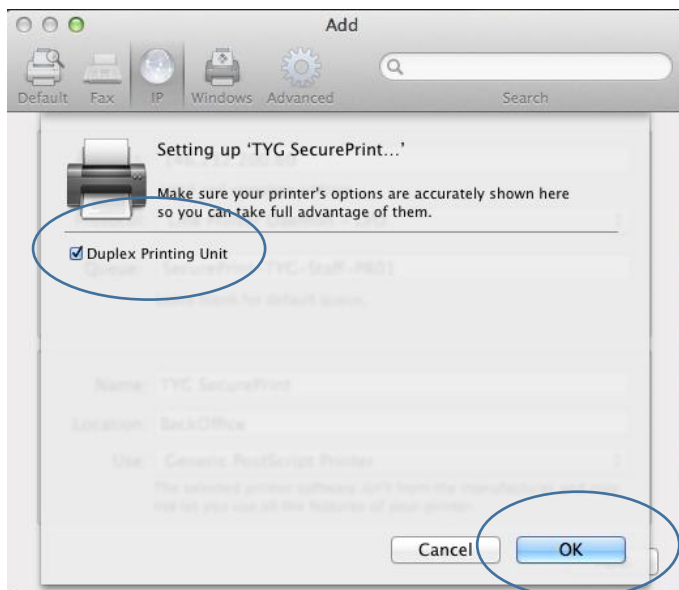
HUMARGA-- \\stbsc04.stb.sun.ac.za\STB_PRINT_Q01

FIRGA, Biblioteek - - \\stbsc05.stb.sun.ac.za\STB_PRINT_Q0

TYG Safecom Print Queue Configuration, Then Click **Add**



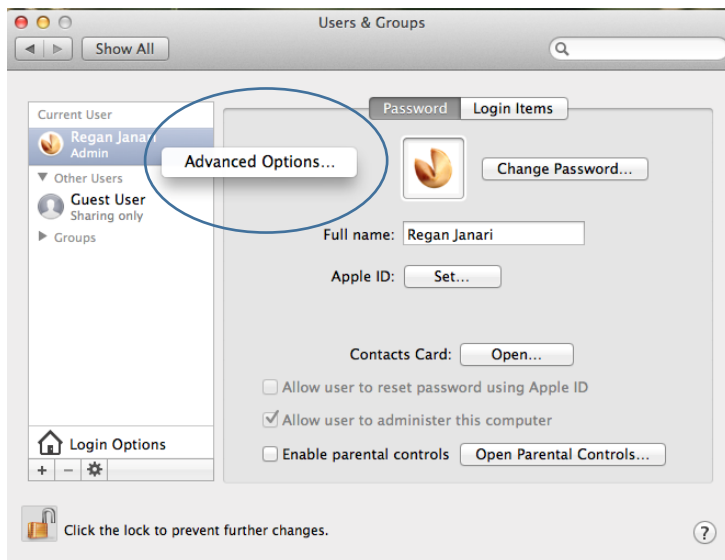
Select **Duplex Printing** and Click **Ok**.



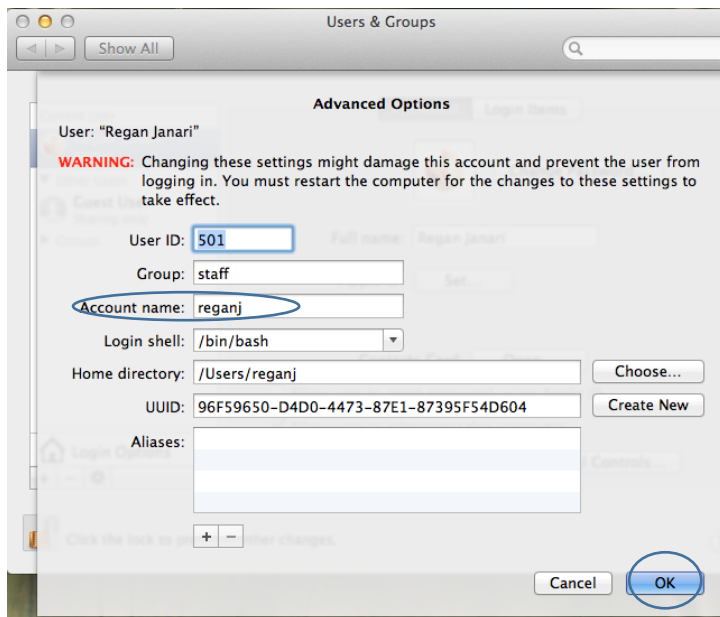
Navigate and Click On **Users and Groups**



Right Click on the Current User and Click on **Advanced Options**



Change **Account Name** to Active Directory Username.



And Click **OK**.

Setting Up Push Printing

Address: STBPUSHPRINT.STB.SUN.AC.ZA
Valid and complete host name or address.

Protocol: Line Printer Daemon - LPD

Queue: S-ITTD-K314-PR01
Leave blank for default queue.

Name: S-ITTD-K314-PR01

Location: Stellenbosch

Use: Generic PostScript Printer
The selected printer software isn't from the manufacturer and may not let you use all the features of your printer.

Add

- Add push printer server **Address** eg: stbpushprint.stb.sun.ac.za Or stbsc01.stb.sun.ac.za
- **Protocol** must be Line Printer Daemon – LPD
- **Queue** must be the printer queue name
- **Name** can be anything that the user wants to call the printer, but IT recommend to maintain the Name to the Queue name